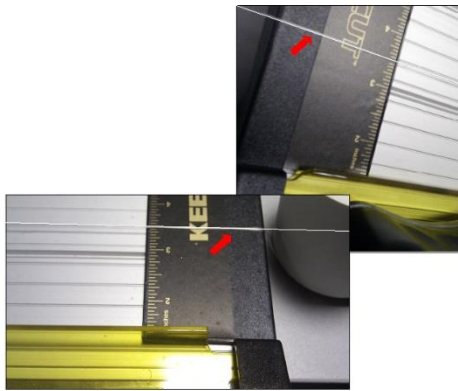


Technic ARC TE checking base plate straightness

Before you start

Before starting any work, check that you have the following equipment:

- Strong nylon thread like fishing line
- Tape measure or ruler



1. Fit cutter to table and stretch cord along machine

If the ARC TE cutter is not fixed to a flat surface, the yellow clamping strip can be distorted and come into contact with the blade. Carry out the following test and adjust the table surface to bring it within 3mm (1/8") of flatness.

After fitting the cutter to the table edge, stretch a strong thread or cord along the machine as shown. Fishing line works well for this purpose.

(Please note image shows ARC but it is the same principal for the TE).

MyBinding.com

9620 NE Tanasbourne Dr. Suite 250 Hillsboro, OR 97124

Local: 503-640-5920

Toll Free: 1-800-944-4573

2. Measure the height of the cord

Measure the height of the cord above the base at intervals along the base. If the base is flat, it should measure 4mm (1/8"). If necessary, adjust the table surface to bring it within 3mm (1/8") of this measurement.

