

***SealerSales W-300T
12" Double Impulse
Foot-Operated Sealer***

Parts List



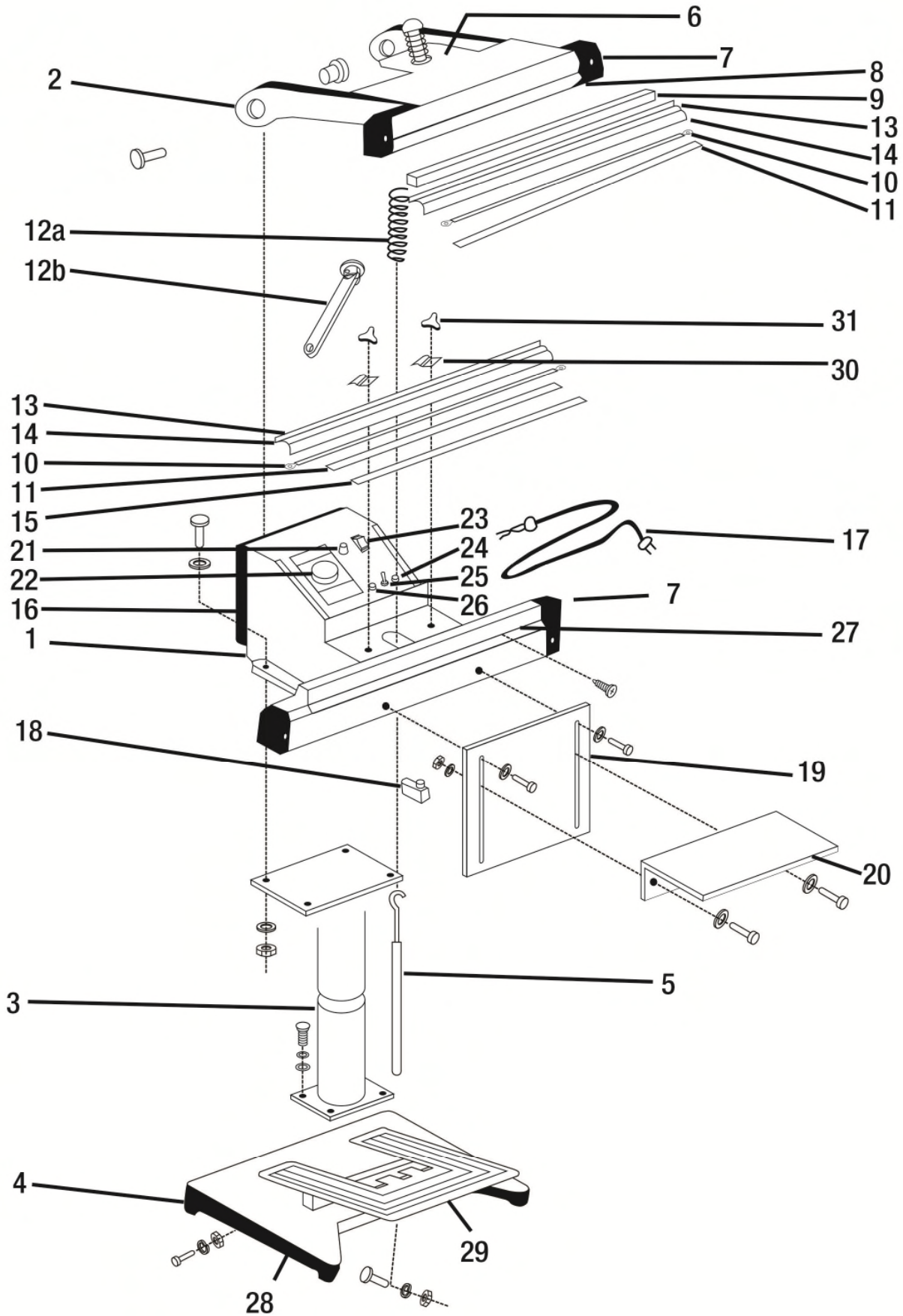
Provided by

MyBinding.com
When Image Matters.

Call Us at 1-800-944-4573

■ **WH Double Impulse Foot Sealers**
W-300T, W-450T, W-600T
Spare Parts DIAGRAM

MyBinding.com
 5500 NE Moore Court
 Hillsboro, OR 97124
 Toll Free: 1-800-944-4573
 Local: 503-640-5920



■ WH Double Impulse Foot Sealers

W-300T, W-450T, W-600T

Spare Parts **DIAGRAM**

MyBinding.com
 5500 NE Moore Court
 Hillsboro, OR 97124
 Toll Free: 1-800-944-4573
 Local: 503-640-5920

Item	Part #	Description	Comments
1		Control Set Bracket/Skull (18", 24")	
2		Upper Jaw (18", 24")	
3	ST-WH	Standing Tube	
3a	STE-WH	Standing Tube Extended, 36"	
4	WHDF-4	Pedal Base	
5	PPS-WH	Level Set, Pulling Pole Set	
5a	PPSE-WH	Level Set, 36"	
	ST+PP-WH	Standing Tube + Pulling Pole Set	
	STE+PPE-WH	Standing Tube, Extended, 36" + Pulling Pole Set	
6	WHDF-6	Pressing Spring, Small W-00403	
6a	WHDF-6A	Cap Screw and Washer on top of Pressing Spring	
6b	WHDF-6B	Upper Bracket including Screws and Washers	
7	HTAB-WH	Element Spring Hook Unit W-00803	
7a	WHDF-7a	Element Hook Cover	
8		Silicone Rubber Holder Plate	
8a		Extra Strip for Bottom Silicone Holder - silver	
9	SR-	Silicone Rubber, 3/8" Flat/no groove	specify model # when ordering
10	HE-specifymodel#	Heating Wire 5mm	specify model # when ordering
11a		PTFE Adhesive Tape (Old Model)	
11b	TR-specifymodel#	PTFE Cover (New Model)	specify model # when ordering
12	W-300T-12	Pressing Spring, Large (W-300T and W-300DAT)	specify model # when ordering
	WHDF-12-450/600	Pressing Spring, XL (same as WHLF) W-00402	specify model # when ordering
12A	WHLF-9A	Short Pulling Pole and Plate Set	
13	TR-specifymodel#	PTFE Cover	specify model # when ordering
14		PTFE Roller, Iron Stick	
	WHA-18a	Iron Stick 300 (WHA / WHDF)	
	WHA-18b	Iron Stick 450 (WHA / WHDF)	
	WHA-18c	Iron Stick 600 (WHA / WHDF)	
15	WHA-21	Fiber Plate W-030A (same as WHA-21)	
16	TRNS-specifymodel#	Transformer W-00612	specify model # when ordering
17	PC-WH	Power Cord	
18	MSW-WHF	Limit/Microswitch MSW-WHF W-00701	
19	WHDF-19	Working Adjusting Plate - 6 1/4" x 9 1/2" (W x L)	
19A	WHDF-19A	Working Adjusting Plate Screw Set - (Includes: 2-screws, 4-washers, and 2-wing nuts) - WHA, WHDF	
20	WHDF-20	Working Plate - 13 1/2" x 7" (W x L)	
20A	WHDF-20A	Working Plate Screw Set - WHA, WHDF	
21	WHDF-21	Fuse Holder, 15A, 125Vac E-00205	
22	T-W-Double	Timer, E-009A T-W-300T/450T/600T, SH2-Y1-2S	
23	WHLH-7	Power Switch, 3P, 15A/125V (W-Series)	
24	WHDF-24	Lamp for Double Wire, Red	
25	WHDF-25	Single/Double Select Switch, 4P E-00102	
26	WHDF-26	Lamp for Single Wire, Yellow	
26a	WHDF-26a	Lamp for Single Wire, Orange	
27		PTFE Cover Fixed Plate	specify model # when ordering
28	WHDF-28	Foot Board Bracket	
28A	WHDF-28a	Screws for Pedal	
29	FB-WH	Foot Board	
30	WHA-14	Plate for PTFE Sheet (Clip) (W-Series)	
31	WHA-15	Multi Star Knob (W-Series)	
32a	Fuse-15amp	Fuse 12" 15 amp, E01904	
32b	Fuse-20amp	Fuse 18" 20 amp	
32c	Fuse-25amp	Fuse 24" 25 amp	
33a	W-600T-33A	Relay 40A for W-600T	
33b	W-450T-33B	Relay 25A for W-450T	
34	WHI-11A	Circuit Breaker, 7A	