

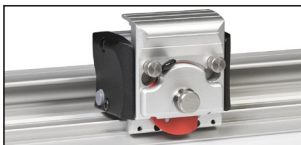
Javelin Series 2

The accuracy of the Javelin Series 2 makes it ideal for cutting banner materials, pop-ups and other display materials that require precise and accurate cutting to within .008" over the full length of the cut. With this precise cutter, you can eliminate gaps and wasted material. The Javelin Series 2 features a new, high-performance cutting head design that relies on robust Graphik blades with a cutting depth of up to 1/2". These unique reversible blades cater to both left and right-handed operators.

Big Bench Xtra

Constructed of strong anodized aluminum extrusions, the Big Bench Xtra creates a solid and precise cutting table and workstation. The stability of the Big Bench Xtra with individual level adjustment on each leg provides a firm and flat work surface to ensure extreme accuracy. Special order sizes and additional shelf fittings are available as an option.

Surface Mounted Lift & Hold Mechanism is affixed to the table by screws, ultimately securing the cutter bar in place to prevent shifting while cutting.



Textile Cutting Tool

The Javelin Series 2 features a new, high-performance cutting head design that can accommodate an easy-to-change 45mm textile blade holder, Graphik blade holder and a medium-duty blade holder.

Item #	Description
69131	Graphik Blades (100)
69108	Medium-duty blades (100)
69119	Superior quality blades (100)
69132	45mm OLFA cutting wheels (10)
69133	45mm Standard cutting wheels (10)
60394	Replacement Series 2 Cutting Head



Big Bench Xtra shown with Javelin. Worktop not included. 3/4" MDF or finished plywood recommended.

MyBinding.com
 5500 NE Moore Court
 Hillsboro, OR 97124
 Toll Free: 1-800-944-4573
 Local: 503-640-5920

Javelin Series 2 Cutter		Big Bench Xtra & SMLH	
Item #	Cut Size	Item #	Size
60275.....	44"	60928.....	44"
60276.....	64"	60930.....	64"
60277.....	84"	60932.....	84"
60278.....	104"	60934.....	104"
60279.....	124"	60936.....	124"
		60970.....	Surface Mounted Lift & Hold Mechanism

5-year general warranty on all parts (except blades, clamping strips and cutting wheels).
 20-year warranty on the bearings used in the cutting head.