

SealerSales FS-358F

***14" Foot-Operated Impulse Sealer
w/ 8mm Seal Width***

Instruction Manual



Provided by

MyBinding.com
When Image Matters.

Call Us at 1-800-944-4573

8. TROUBLESHOOTING

MALFUNCTIONS	REASONS	SUGGESTIONS
No sealing Power lamp is off	Disconnected plug Power cord is broken Transformer is broken	Check or change the plug Replace or repair the cord Replace the transformer
No sealing Power lamp is on Sealing lamp is on	Heater (heating element) is broken Spring hook our mounting spring is loose or in poor contact Terminals of the heating element are in poor contact	Replace the heater Clean or tighten spring hook connection Clean the terminals and adjust if needed
No sealing Power lamp is on Sealing lamp is off	Microswitch is activated Defective microswitch	Adjust the microswitch lever Adjust the microswitch position Replace the microswitch
PTFE cloth burn	Timer malfunction Prolonged heating time	Replace timer or relay Decrease the timer setting
Heating wire breaks	Worn PTFE adhesive	Replace the PTFE adhesive
Seal is wrinkled	Heating timer is set too high Cooling time is not enough	Lower the timer setting Continue pressing the upper lever for 1-2 seconds after the light goes off
Imperfect seal	Worn PTFE cloth Worn silicone rubber	Replace PTFE cloth Replace silicone rubber
Broken seal	Prolonged sealing time	Decrease timer setting
Non-full-weld seal	Sealing time is too short	Increase sealing time
Seal sticking	Dirty PTFE cloth Dirty sealing bar	Clean the PTFE cover Clean the silicone rubber sealing bar

FOOT SEALER

OPERATING INSTRUCTIONS

MODELS

FS-358F, FS-458F, FS-658F



Last updated: 01/10/13

1. OPERATING INSTRUCTIONS

1. Plug in unit.
2. Set power switch to “ON”.
3. Adjust the timer to the minimum setting necessary to seal your poly bag.
4. Insert bag between the jaws of the sealer. Press down on foot pedal. When the light turns off, sealing is completed. **Wait one to two seconds after the light turns off to allow the seal to set and cool, then release the foot pedal.**

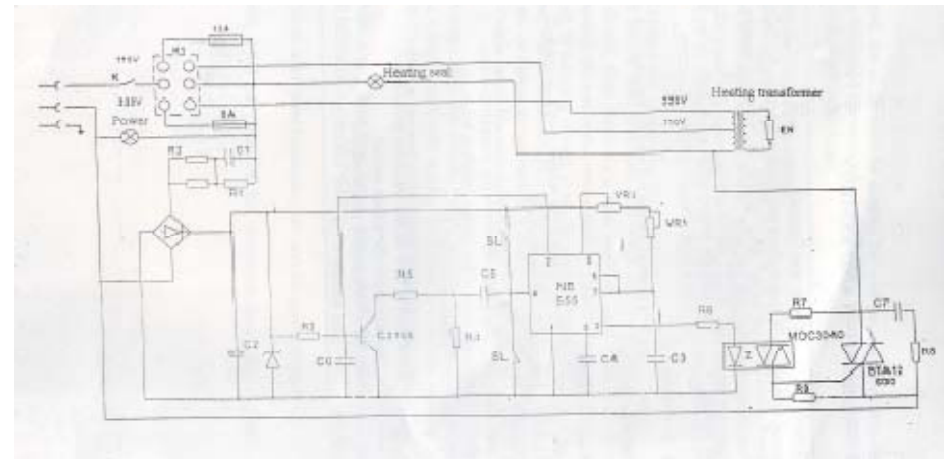
2. TIPS FOR SUCCESSFUL SEALING

- Always keep the sealing platform clean. Particular care should be taken to remove any residue from the PTFE cover.
- Clean the sealing platform with a dry cloth. Do not use water or solvents.
- Make sure to change the upper PTFE cover (above the element wire) when it becomes worn. If this is not done, the element wire may short out and become damaged.
- When replacing the heating element, always check the condition of the bottom PTFE tape. **We recommend changing the PTFE tape EVERY TIME the element is changed. If the PTFE tape is not changed, you risk the possibility of damage to the timer.**
- Occasionally check the condition of the top pressure pad (silicone rubber) for wear and/or burn. A poor rubber pad will affect the quality of the seal.

6. SPECIFICATIONS

MODEL NO.	FS-358F	FS-458F	FS-658F
Power	600W	800W	1000W
Max. Seal Length	14”	18”	26”
Seal Width	8mm	8mm	8mm
Max. Seal Thickness	20mil	20mil	20mil
Heat Time (sec)	0.2-1.8	0.2-1.8	0.2-1.8
Weight	63lbs	65lbs	68lbs

7. CONNECTION DIAGRAM



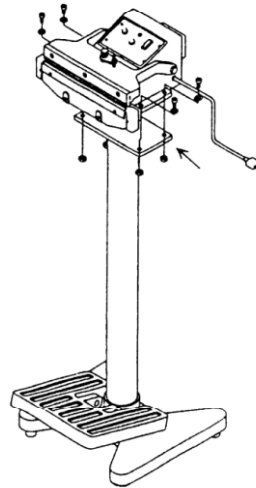
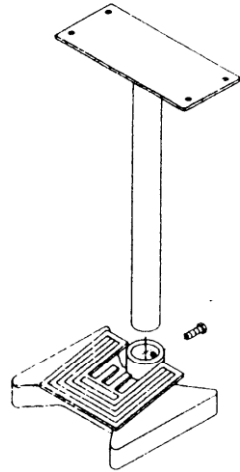
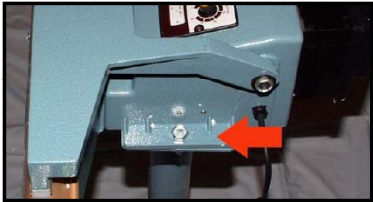
4. ASSEMBLY INSTRUCTIONS

Part #s can be located in the spare parts diagram

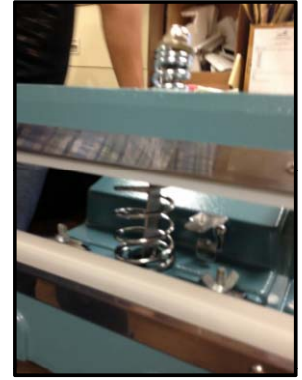
Step 1. Attach the standing tube (F2) to the base (L5). Tighten the base screw (I6) to lock the tube in place.

Step 2. Attach the foot pedal (L6) to the base (L5). Tighten screws on base to secure the foot pedal.

Step 3. Position the skull on the standing tube. Secure the skull to the standing tube with screws (I0) on both sides of skull.



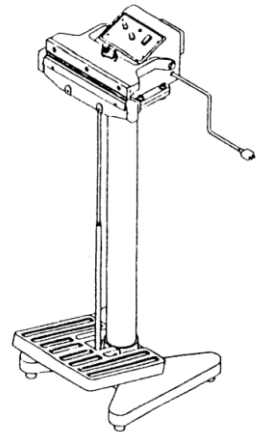
Step 4. Insert the pulling plate/short pulling pole (F8+F9) through the small spring (S10) and set it on top of the upper jaw (L2). Place the large spring (C8) on the lower jaw.



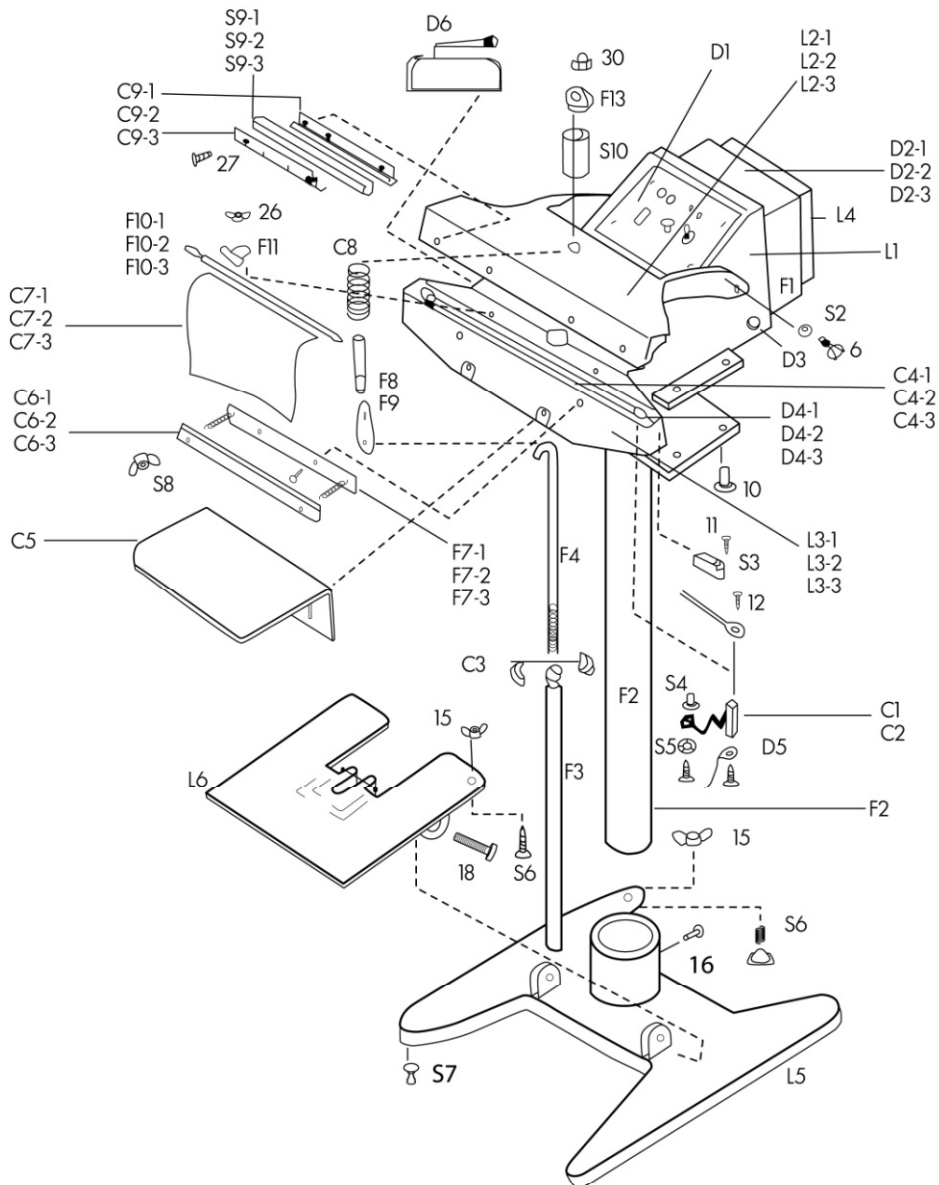
Step 5. Connect the upper part of the pulling pole (F4) to the pulling plate/short pulling pole (F8+F9). Press down on the lower jaw and insert the cross bar at the end of the lower pulling pole (F3) into the notches on the foot pedal.

Please note: The length of the pulling pole can be adjusted with the nut (C3). To lengthen, turn clockwise and to shorten, turn counterclockwise.

Step 6. Check the correct length of the pulling pole by pressing down the pedal. The upper jaw and lower jaw should touch when the foot pedal is pressed. If not, adjust the length.



5. PARTS DIAGRAM



3. REPLACING THE WIRE AND PTFE

Be sure to unplug the power cord before replacing any parts.

To replace PTFE roll

1. Remove pressing plate and loosen the PTFE clips.
2. Pull out the new section of PTFE tape and cut off used portion. Reattach pressing plate.
3. Adjust PTFE screw to tighten PTFE roll. Tighten PTFE clips.

To replace heating element wire

1. Loosen PTFE clips. Remove PTFE front press bar. Lift up PTFE.
2. Loosen side cover fixed screw and element fixed screw. Remove broken element wire.
3. Remove PTFE adhesive and replace with a new adhesive. Note: The PTFE Adhesive works as a barrier between the body and element. **Never allow the element to come in direct contact with the sealer body as that will damage the timer. A good rule of thumb is to change out the PTFE adhesive every time you change out the element.**
4. Put new element wire and tighten element fixed screw. Also retighten side cover fixed screw. Do not bend or crimp the wire.
5. Replace the PTFE and PTFE front press bar. Tighten PTFE with PTFE screw. Tighten PTFE clips.